



■ **APPLICATIONS:**

Check valves completely close the passage of fluid circulating in one direction leaving the other free. Check valves prevent reversal flow circulation.

■ **USE:**

Facilities for hot and cold water, sewage, septic tanks, oils and neutral chemicals.

■ **TECHNICAL LIMITS:**

Working temperature range: 0° a 80°C

Maximum pressure: PN10

Minimum opening pressure: 10 mbar

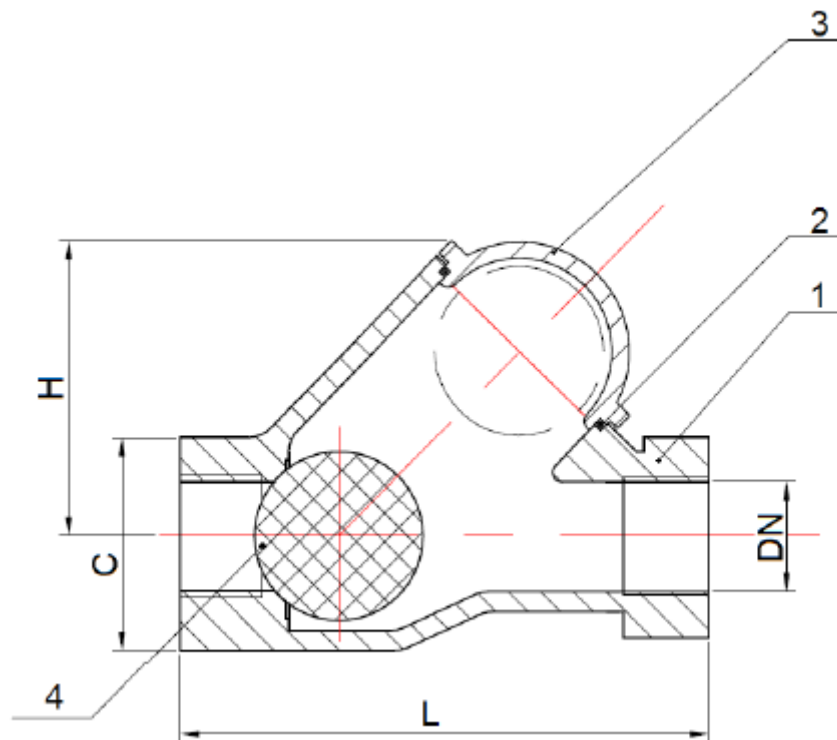
■ **FEATURES:**

Valve design according UNE EN-12334

BSP threaded

■ **INSTALLATION:**

The ball check valves are installed in horizontal position with the ball at the top, also vertical installation is possible as long as the flow is uphill.



Nº	PART	MATERIAL	STANDARD
1	Body	Cast Iron GGG40 (EPOXY coated)	DIN 1691 UNE EN 1561
2	Gasket	NBR	
3	Cover	Cast Iron GGG40 (EPOXY coated)	DIN 1691 UNE EN 1561
4	Ball	Metal + NBR	

DT	DN	L	H	Bolts	Kgs
1"	25	125	74	2xM6	1.27
1 1/4"	32	132	74	2xM6	1.2
1 1/2"	40	145	85	2xM6	1.93

All dimensions in millimeters

